



BUTARQUE P R E M I U M



butarquepremium.com



BUTARQUE
PREMIUM

WELCOME TO ONTIME BUTARQUE BOUTIQUE STADIUM

WE ARE A GREAT STADIUM, NOT A BIG STADIUM



BUTARQUE
PREMIUM



ESTADIO
ONTIME BUTARQUE

15'



MADRID
CITY CENTER

15'



ESTADIO
SANTIAGO BERNABÉU



ESTADIO RIYADH AIR
METROPOLITANO

WE ARE 15 MINUTES FROM THE CENTER OF MADRID

WE CAN ARRANGE YOUR TRANSPORT

VIP AREAS AVAILABLE



BUTARQUE
PREMIUM

SKY EXPERIENCE

TRIBUNA PREMIUM

BENCH EXPERIENCE

TUNNEL EXPERIENCE

CORNER CLUB

TEAM ARRIVAL

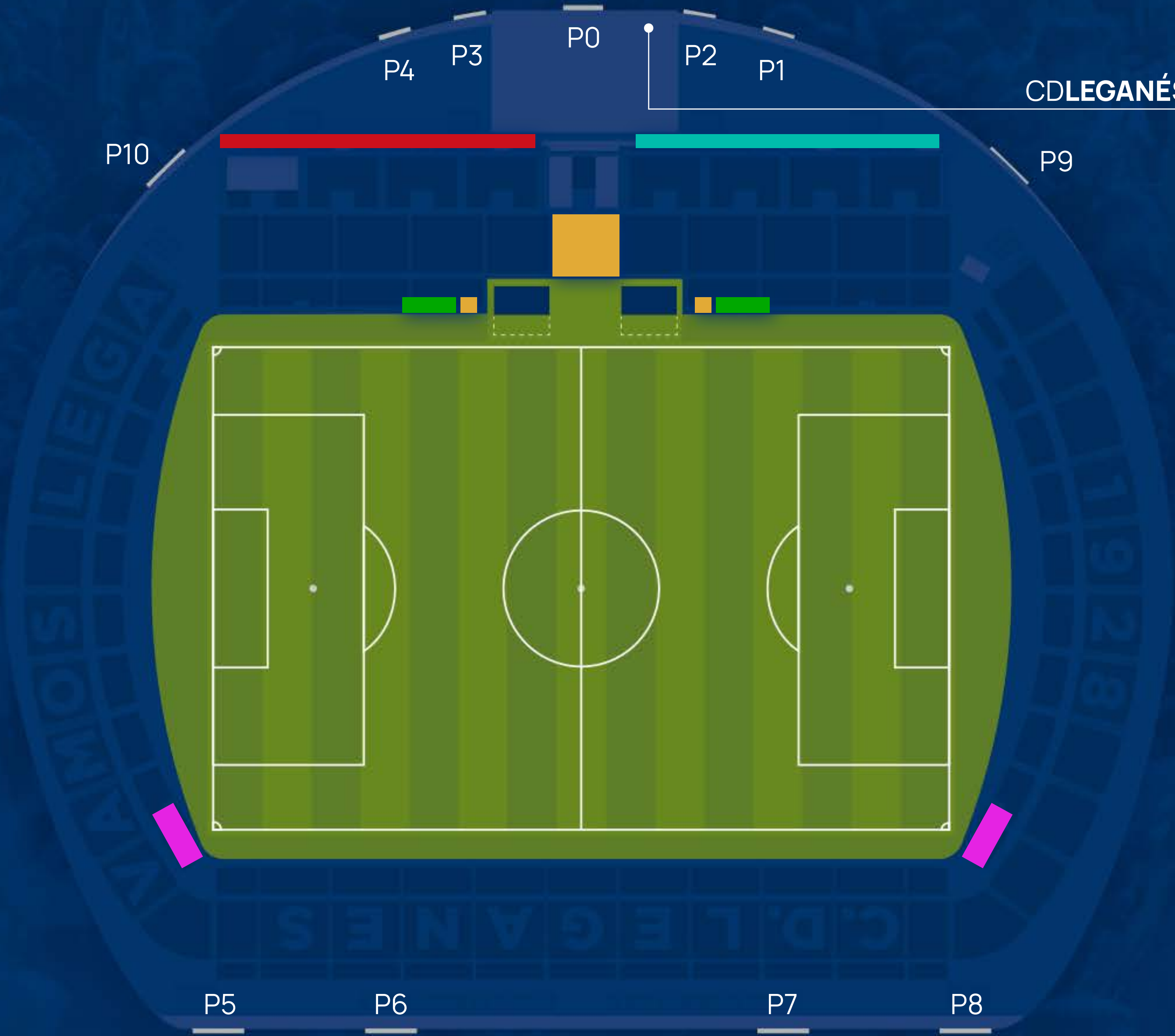
MEET & GREET

VIP SEATING MAP



BUTARQUE
PREMIUM

- SKY EXPERIENCE
- TRIBUNA PREMIUM
- TUNNEL EXPERIENCE
- BENCH EXPERIENCE
- CORNER CLUB



CD**LEGANÉS** Shop

SKY EXPERIENCE



Privileged location within Ontime Butarque in the Grand Stand. Padded seat

Premium catering available starting 1 hour before the match at El Cielo de Butarque. Included during the halftime

Waiter service during the match: cold snacks and drinks

TV screens in El Cielo de Butarque to follow the match

Heating in the stands.

Entry 1 hour before the match

Access P0



BUTARQUE
PREMIUM

TRIBUNA PREMIUM



Privileged location within Ontime Butarque in the Grand Stand with a padded seat

Includes food and drink in **Box Lunch** format, to be enjoyed from your seat

Entry 1 hour before the match



BUTARQUE
PREMIUM



Access P1 - P2



BENCH EXPERIENCE



Seats next to the benches of CD Leganés or the away team

Enjoy the warm-up at field level

Includes food and drink in **Box Lunch** format, to be enjoyed from your seat

Entry 45 minutes before the start of the match



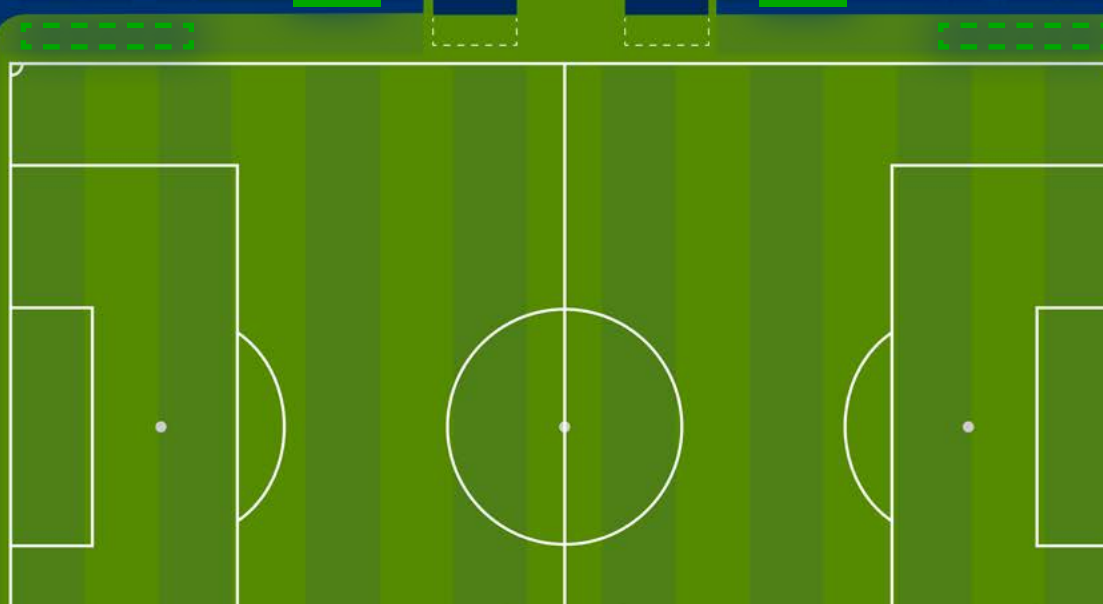
BUTARQUE
PREMIUM



Access P3 - P4
LOCAL

Access P1 - P2
AWAY

WARM-UP LOCAL AWAY WARM-UP



TUNNEL EXPERIENCE



Seats next to the benches of CD Leganés or the away team

Tour of the Estadio Ontime Butarque

Catering in the VIP Lounge 45 minutes before the match and during halftime

View the players through the glass of the Tunnel, before they go out to warm up, when they return, and again when they leave the tunnel to start the match

Entry 1 hour before the start of the match

Access P0

LOCAL

AWAY



BUTARQUE
PREMIUM



CORNER CLUB



Exclusive pitchside seats next to the corner kick area

Access to **CLUB 1928 Lounge**

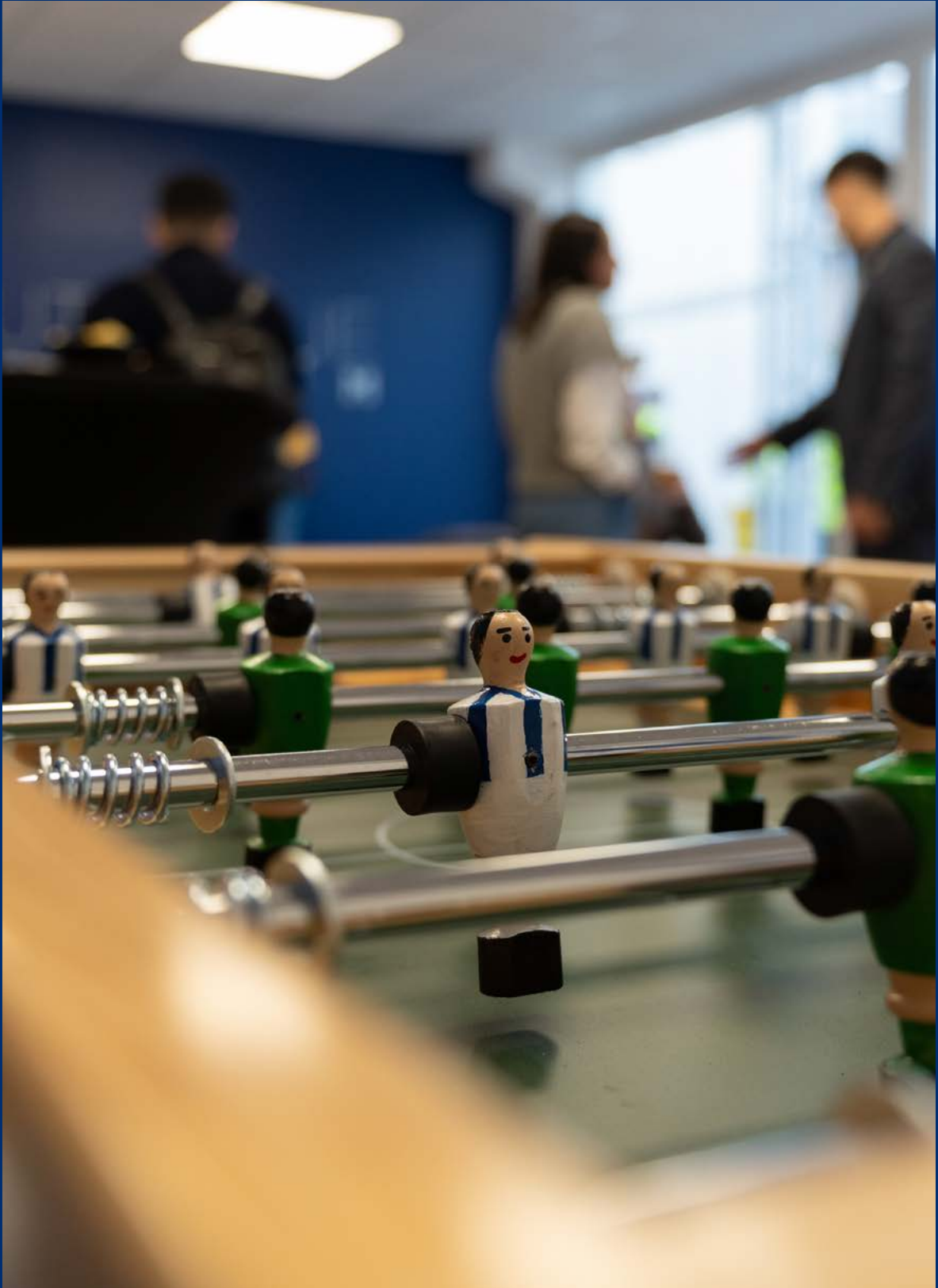
Catering service 1 hour before the match and during half-time

Premium padded and covered seat

1 hour before the start of the match

Maximum capacity 10 people

Access P5



BUTARQUE
PREMIUM

TEAM ARRIVAL



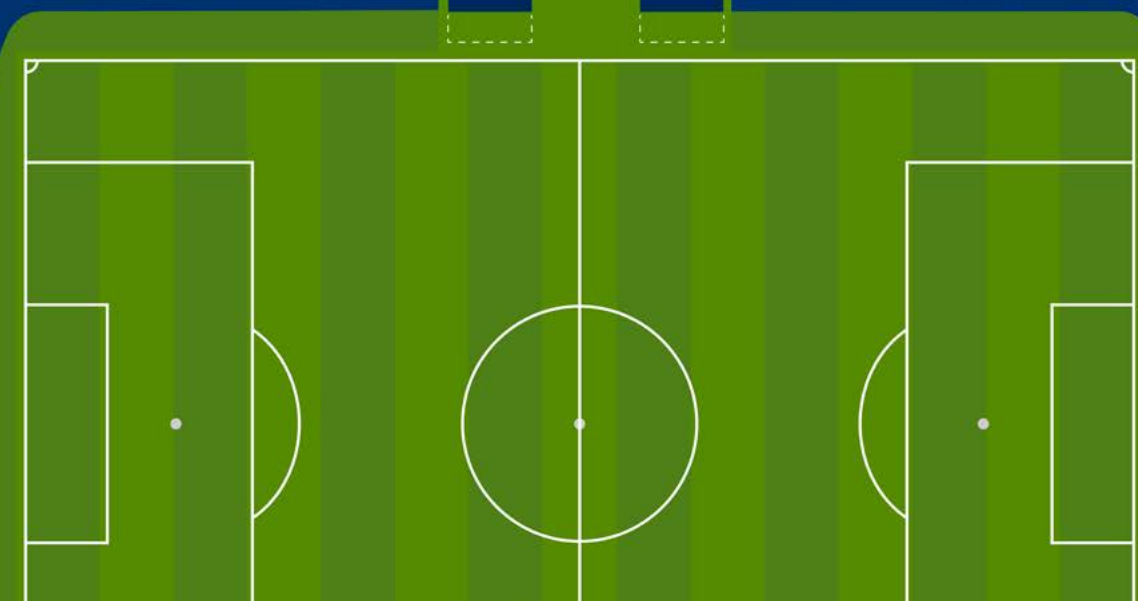
Exclusive experience for those who already have a ticket or season pass for the match

Catering in the VIP Lounge Tunnel 2 hours before the start of the match, lasting 45 minutes

View the players through the glass of the Tunnel when they arrive at the stadium and when they go out for the pre-match field recognition before warming up

Entry 2.5 hours before the start of the match

Access P0



BUTARQUE
PREMIUM

MEET & GREET



Exclusive experience for those who already have a ticket or season pass for the match

Meet some of the CD Leganés players, exclusive for a small group of up to 10 people, after the match in the Butarque Premium Zone

Access P0



BUTARQUE
PREMIUM



COMPARATIVA



BUTARQUE
PREMIUM

	LOCATION	CATERING	ACCESS	PLAYER VIEWING IN THE TUNNEL ROOM	WARM-UP VIEWING	TOUR STADIUM	MEET AND GREET WITH PLAYERS
SKY EXPERIENCE	TRIBUNA ALTA <small>Padded seat</small>	YES <small>At El Cielo de Butarque. Included during the match and halftime</small>	GATE 0 <small>Entry 1 hour before the match</small>				
TRIBUNA PREMIUM	TRIBUNA ALTA <small>Padded seat</small>	YES <small>Box Lunch</small>	GATES 1-2 <small>Entry 1 hour before the match</small>				
BENCH EXPERIENCE	TRIBUNA BAJA <small>Next to the benches</small>	YES <small>Box Lunch</small>	GATES 1-2 GATES 3-4 <small>Entry 45 minutes before the start of the match</small>		YES		
TUNNEL EXPERIENCE	TRIBUNA BAJA <small>Next to the benches</small>	YES <small>Catering in the VIP Lounge 45 minutes before the match and during halftime</small>	GATE 0 <small>Entry 1 hour before the match</small>	YES		YES	
CONER CLUB	PITCHSIDE <small>Next to the corner flag</small>	YES <small>In the Club 1928 Lounge, 1 hour before the match and during halftime</small>	GATE 5 <small>Entry 1 hour before the match</small>		YES <small>(Optional)</small>		



CONTACT:

butarquepremium@cdleganes.com